



**LIST PRICES**  
 Effective May 7, 2024  
 Subject to change  
 without notice

**Reservoir Accessories  
 Price List**



**Product/Price Index**

FILLER BREATHERS ..... 1

RESERVOIR FLANGES ..... 2

SAE FULL & HALF  
 COUPLINGS..... 3

CHANNEL MOUNTED  
 CUSHION CLAMPS..... 3

CLAMP ANCHOR CHANNEL .... 4

SUCTION STRAINERS..... 4

TANK DIFFUSERS ..... 5

FILTER HEADS  
 & ELEMENTS..... 5

PRESSURE GAUGES ..... 7

GAUGE ISOLATORS..... 8

PRESSURE SWITCH ..... 8

LIQUID LEVEL GAUGES..... 8

MOTOR BASE PLATES..... 8

MOTOR DAMPENING  
 BARS..... 9

MODULAR O’RING KIT ..... 10

## Filler Breathers

Spin-on Filler Breather Adaptors		
Part Number	Description	List Price
FBS-10012-012P	NPT Style Spin-on	\$30.00
FBS-10216-012P	NPT Style Spin-on	\$30.00
FBS-10816-104P	NPT Style Spin-on	\$30.00
FBS-10816-F	Flange Style Spin-on	\$88.00
FBS-10816-F-G	Flange Style w/Gauge Port	\$112.00
FBS-10012-B	Bayonet Style Spin-on	\$43.00
FBS-10216-B	Bayonet Style Spin-on	\$51.00
FBS-10816-B	Bayonet Style Spin-on	\$50.00

Filler Breather Caps			
Part	Custom Pt No Code1	Description	List Price
FB-C-A	A	"A" Cap	\$11.00
FB-C-D	D	"D" Cap	\$15.00
FB-C-H	H	"H" Cap	\$22.00
FB-C-K	K	"K" Cap	\$21.00
FB-C-MB-P004		Mini Cap 1/4" NPT	\$18.00
FB-C-MB-P006		Mini Cap 3/8" NPT	\$18.00
FB-C-MB-P008		Mini Cap 1/2" NPT	\$25.00
FB-C-MB-P012		Mini Cap 3/4" NPT	\$25.00

Filler Breather Mounting Flanges			
Part	Custom Pt No Code1	Description	List Price
FB-F-008	008	008 Flange 1/2" Height	\$8.00
FB-F-108	108	108 Flange 1 1/2" Height	\$20.00
FB-F-600	600	600 Flange 6" Height	\$119.00

Other Filler Breather Components			
Part	Custom Pt No Code1	Description	List Price
FB-O-L	L	Lock Kit (w/out Pad Lock)	\$6.00
FB-O-PL	PL	Pad Lock	\$11.00
FB-O-D*	D--	Dipstick (less than 6")	\$12.00
FB-O-D*	D--	Dipstick (6" or greater)	\$15.00

\* Dipstick Option can be ordered as part of a cap assembly ONLY.

Filler Breather Screens			
Part	Custom Pt No Code1	Description	List Price
FB-S-P	P	"P" Screen - Nylon - 4"	\$16.00
FB-S-R	R <sup>2</sup>	"R" Screen - Brass - 4"	\$16.00
FB-S-V	V <sup>2</sup>	"V" Screen - Brass - 9 1/4"	Quote
FB-S-W	W	Screen - Stainless - 3 1/4" Length	\$12.00
FB-S-X	X	"X" Screen - Stainless - 6 1/2"	\$17.00
FB-S-Y	Y	Screen - Stainless - 8 1/4" Length	\$24.00
FB-S-Z	Z	Screen - Stainless - 10 1/4" Length	\$15.00
FB-S-C16	C16	Screen - Stainless - 3" Length, 16"	\$18.00

Standard Filler Breather Assemblies		
Part Number	Description	List Price
FB-A008W	A Cap - "W" Screen	\$17.00
FB-A008P	A Cap - "P" Screen	\$22.00
FB-K008W	K Cap - "W" Screen	\$31.00

- 1 Code used in part number breakdown on page 137 in our Product Catalog.
- 2 Check with factory for availability on these screens.

## Return Line Flanges

Reservoir Return Line Flanges - Pipe Sizes		
Part Number	Description	List Price
<b>PREMIUM LINE</b>		
RLF-012P	3/4" Pipe	\$40.00
RLF-100P	1" Pipe	\$40.00
RLF-104P	1 1/4" Pipe	\$40.00
RLF-108P	1 1/2" Pipe	\$40.00
RLF-200P	2" Pipe	\$40.00
<b>ECONOMY LINE</b>		
RLF-000P	Blank	\$29.00
RLF-008P	1/2" Pipe	\$27.00
RLF-012P	3/4" Pipe	\$28.00
RLF-100P	1" Pipe	\$27.00
RLF-104P	1 1/4" Pipe	\$22.00
RLF-108P	1 1/2" Pipe	\$21.00
RLF-200P	2" Pipe	\$25.00

Reservoir Return Line Flanges - Tube Sizes		
Part Number	Description	List Price
<b>PREMIUM LINE</b>		
RLF-008T	1/2" Tube	\$40.00
RLF-012T	3/4" Tube	\$40.00
RLF-100T	1" Tube	\$40.00
RLF-104T	1 1/4" Tube	\$40.00
RLF-108T	1 1/2" Tube	\$40.00
RLF-200T	2" Tube	\$40.00
<b>ECONOMY LINE</b>		
RLF-006T	3/8" Tube	\$18.00
RLF-008T	1/2" Tube	\$26.00
RLF-012T	3/4" Tube	\$18.00
RLF-100T	1" Tube	\$28.00
RLF-104T	1 1/4" Tube	\$30.00
RLF-108T	1 1/2" Tube	\$28.00
RLF-200T	2" Tube	\$18.00

## Suction Line Flanges

Reservoir Suction Line Flanges - Pipe Sizes		
Part Number	Description	List Price
<b>PREMIUM LINE</b>		
SLF-012P	3/4" Pipe	\$40.00
SLF-100P	1" Pipe	\$40.00
SLF-104P	1 1/4" Pipe	\$40.00
SLF-108P	1 1/2" Pipe	\$40.00
SLF-200P	2" Pipe	\$40.00
<b>ECONOMY LINE 4 1/2" Cutout</b>		
SLFE-500-000P	Blank	\$59.00
SLFE-500-008P	1/2" Pipe	\$50.00
SLFE-500-012P	3/4" Pipe	\$50.00
SLFE-500-100P	1" Pipe	\$49.00
SLFE-500-104P	1 1/4" Pipe	\$49.00
SLFE-500-108P	1 1/2" Pipe	\$54.00
SLFE-500-200P	2" Pipe	\$55.00
<b>ECONOMY LINE 6 1/2" Cutout</b>		
SLFE-700-108P	1 1/2" Pipe	\$49.00
SLFE-700-200P	2" Pipe	\$75.00
SLFE-700-208P	2 1/2" Pipe	\$77.00
SLFE-700-300P	3" Pipe	\$106.00

Reservoir Suction Line Flanges - Tube Sizes		
Part Number	Description	List Price
<b>PREMIUM LINE</b>		
SLF-008T	1/2" Tube	\$40.00
SLF-012T	3/4" Tube	\$40.00
SLF-100T	1" Tube	\$40.00
SLF-104T	1 1/4" Tube	\$40.00
SLF-108T	1 1/2" Tube	\$40.00
SLF-200T	2" Tube	\$40.00
<b>ECONOMY LINE 4 1/2" Cutout</b>		
SLFE-500-006T	3/8" Tube	\$31.00
SLFE-500-008T	1/2" Tube	\$31.00
SLFE-500-012T	3/4" Tube	\$47.00
SLFE-500-100T	1" Tube	\$49.00
SLFE-500-104T	1 1/4" Tube	\$49.00
SLFE-500-108T	1 1/2" Tube	\$54.00

## SAE Full and Half Couplings

Part	Description	List Price
<b>SAE to NPT Full Couplings</b>		
4S-4N-TD	#4 SAE to 1/4" NPT	\$16.00
6S-6N-TD	#6 SAE to 3/8" NPT	\$18.00
8S-8N-TD	#8 SAE to 1/2" NPT	\$19.00
10S-12N-TD	#10 SAE to 1/2" NPT	\$36.00
12S-12N-TD	#12 SAE to 3/4" NPT	\$22.00
16S-16N-TD	#16 SAE to 1" NPT	\$30.00
<b>SAE to Socket Weld Full Couplings</b>		
8S-8W	#8 SAE to 1/2" Pipe	\$19.00
10S-8W	#10 SAE to 1/2" Pipe	\$82.00
12S-12W	#12 SAE to 3/4" Pipe	\$33.00
16S-16W	#16 SAE to 1" Pipe	\$42.00
20S-20W	#20 SAE to 1 1/4" Pipe	\$65.00
24S-24W	#24 SAE to 1 1/2" Pipe	\$89.00

Part	Description	List Price
<b>SAE Half Couplings</b>		
4S-TD	#4 SAE	\$12.00
6S-TD	#6 SAE	\$13.00
8S-TD	#8 SAE	\$15.00
10S-TD	#10 SAE	\$22.00
12S-TD	#12 SAE	\$19.00
16S-TD	#16 SAE	\$31.00
20S-TD	#20 SAE	\$51.00
24S-TD	#24 SAE	\$58.00

## Channel Mounted Cushion Clamps

Channel Mounted Cushion Clamps - TUBE SIZES				
Part Number	Description	List Price	Box Quantity	List Per Box
MCC-008T	1/4" Tube	\$3.60	25	\$90.00
MCC-012T	3/8" Tube	\$5.00	25	\$125.00
MCC-016T	1/2" Tube	\$5.00	25	\$125.00
MCC-020T	5/8" Tube	\$2.00	25	\$50.00
MCC-024T	3/4" Tube	\$5.00	25	\$125.00
MCC-028T	7/8" Tube	\$3.00	25	\$75.00
MCC-100T	1" Tube	\$6.00	25	\$150.00
MCC-104T	1 1/8" Tube	\$3.00	20	\$60.00
MCC-106T	1 3/16" Tube	Quote	20	Quote
MCC-108T	1 1/4" Tube	\$6.50	20	\$130.00
MCC-112T	1 3/8" Tube	\$4.00	20	\$80.00
MCC-116T	1 1/2" Tube	\$7.00	20	\$140.00
MCC-120T	1 5/8" Tube	\$12.00	20	\$240.00
MCC-124T	1 3/4" Tube	\$12.00	20	\$240.00
MCC-128T	1 7/8" Tube	\$6.00	20	\$120.00
MCC-200T	2" Tube	\$6.00	10	\$60.00
MCC-204T	2 1/8" Tube	\$7.00	10	\$70.00
MCC-208T	2 1/4" Tube	\$8.00	10	\$80.00
MCC-212T	2 3/8" Tube	\$9.00	10	\$90.00
MCC-216T	2 1/2" Tube	\$9.00	5	\$45.00
MCC-220T	2 5/8" Tube	\$9.00	5	\$45.00
MCC-228T	2 7/8" Tube	\$12.00	5	\$60.00
MCC-300T	3" Tube	\$12.00	5	\$60.00
MCC-304T	3 1/8" Tube	\$12.00	5	\$60.00
MCC-320T	3 5/8" Tube	\$16.00	5	\$80.00
MCC-404T	4 1/8" Tube	\$24.00	5	\$120.00

Channel Mounted Cushion Clamps - PIPE SIZES				
Part Number	Description	List Price	Box Quantity	List Per Box
MCC-008P	1/4" Pipe	\$3.00	25	\$75.00
MCC-012P	3/8" Pipe	\$3.00	25	\$75.00
MCC-016P	1/2" Pipe	\$3.00	25	\$75.00
MCC-024P	3/4" Pipe	\$3.00	20	\$60.00
MCC-100P	1" Pipe	\$4.00	20	\$80.00
MCC-108P	1 1/4" Pipe	\$6.00	20	\$120.00
MCC-116P	1 1/2" Pipe	\$7.00	20	\$140.00
MCC-200P	2" Pipe	\$9.00	10	\$90.00
MCC-216P	2 1/2" Pipe	\$12.00	5	\$60.00
MCC-300P	3" Pipe	\$15.00	5	\$75.00
MCC-316P	3 1/2" Pipe	\$22.00	5	\$110.00
MCC-400P	4" Pipe	\$30.00	5	\$150.00
MCC-500P	5" Pipe	\$46.00	1	\$46.00
MCC-600P	6" Pipe	\$62.00	1	\$62.00

## Clamp Anchor Channel

Clamp Anchor Channel - SINGLE		
Part Number	Description	List Price
MAC-S12100-036/S	12ga Steel 36"	Quote
MAC-S12100-048/S	12ga Steel 48"	\$15.00
MAC-S12100-120/S	12ga Steel 120"	\$37.00
MAC-S12028-036/S	12ga Steel 36"	Quote
MAC-S12028-048/S	12ga Steel 48"	\$13.00
MAC-S12028-120/S	12ga Steel 120"	\$33.00
MAC-S14026-048/S	14ga Steel 48"	\$14.00
MAC-S14026-120/S	14ga Steel 120"	\$30.00
MAC-S14026-048/SS4	14ga 304 SS 48"	Quote
MAC-S14026-120/SS4	14ga 304 SS 120"	Quote
MAC-S14026-048/SS6	14ga 316 SS 48"	Quote
MAC-S14026-120/SS6	14ga 316 SS 120"	Quote

Clamp Anchor Channel - DOUBLE		
Part Number	Description	List Price
MAC-D12200-048/S	12ga Steel 48"	\$30.00
MAC-D12200-120/S	12ga Steel 120"	\$69.00
MAC-D12124-048/S	12ga Steel 48"	\$31.00
MAC-D12124-120/S	12ga Steel 120"	\$62.00
MAC-D14120-048/S	14ga Steel 48"	\$43.00
MAC-D14120-120/S	14ga Steel 120"	\$57.00
MAC-D14120-048/SS4	14ga 304 SS 48"	Quote
MAC-D14120-120/SS4	14ga 304 SS 120"	Quote
MAC-D14120-048/SS6	14ga 316 SS 48"	Quote
MAC-D14120-120/SS6	14ga 316 SS 120"	Quote

## Suction Strainers

Suction Strainers - Internally Mounted		
Part	By-Pass	List Price
SS-003P006-1-0	None	\$26.00
SS-005P008-1-0	None	\$24.00
SS-005P008-1-*	3 or 5 psi	\$44.00
SS-008P012-1-0	None	\$29.00
SS-008P012-1-*	3 or 5 psi	\$44.00
SS-010P100-1-0	None	\$34.00
SS-010P100-1-*	3 or 5 psi	\$52.00
SS-023P104-1-0	None	\$45.00
SS-023P104-1-*	3 or 5 psi	\$51.00
SS-032P108-1-0	None	\$41.00
SS-032P108-1-*	3 or 5 psi	\$56.00
SS-053P200-1-0	None	\$65.00
SS-053P200-1-*	3 or 5 psi	\$90.00
SS-075P208-1-0	None	\$105.00
SS-075P208-1-*	3 or 5 psi	\$123.00

\* See page 153 in our Product Catalog for Part Number Breakdown on optional Wire Mesh and By-Pass settings.

Note: Mesh sizes on both the Internally and Externally Mounted Strainers, other than 100 Mesh, are QUOTED items.

Suction Strainers - Externally Mounted		
Part	By-Pass	List Price
SS-008P012/P104-1-0	None	\$40.00
SS-014P100/P108-1-0	None	\$41.00
SS-014P100/P108-1-*	3 or 5 psi	\$55.00
SS-014P100/P300-1-0	None	\$68.00
SS-014P100/P300-1-*	3 or 5 psi	\$71.00
SS-014S020/P300-1-0	None	\$87.00
SS-014S020/P300-1-*	3 or 5 psi	\$93.00
SS-021S024/P300-1-0	None	\$80.00
SS-021S024/P300-1-*	3 or 5 psi	\$100.00
SS-023P104/P200-1-0	None	\$48.00
SS-023P104/P200-1-*	3 or 5 psi	\$61.00
SS-023P104/P300-1-0	None	\$70.00
SS-023P104/P300-1-*	3 or 5 psi	\$62.00
SS-032P108/P300-1-0	None	\$77.00
SS-032P108/P300-1-*	3 or 5 psi	\$85.00
SS-053P200/P300-1-0	None	\$103.00
SS-053P200/P300-1-*	3 or 5 psi	Quote
SS-053P200/P400-1-0	None	\$121.00
SS-053P200/P400-1-*	3 or 5 psi	\$129.00
SS-075P208/P400-1-0	None	\$135.00
SS-075P208/P400-1-*	3 or 5 psi	Quote

\* See page 154 in our Product Catalog for Part Number Breakdown on optional Wire Mesh and By-Pass settings.

## Tank Diffusers

Tank Diffusers		
Part Number	Outside Diameter	List Price
TD-014P008-D1	1.30"	\$33.00
TD-025P012-D2	3.20"	\$27.00

Tank Diffusers		
Part Number	Outside Diameter	List Price
TD-095P108-D1	3.20"	\$52.00
TD-157P200-D1	4.20"	Quote

## Filter Heads and Elements

### Spin-on Filter Heads with ΔP Indicator

Spin-on Filter Heads		
Part Number	Description	List Price
SFH-P104/00-0-0-00	1 1/4" NPT x 1 1/4" NPT - no options	\$59.00
SFH-B104/00-0-0-0-00	1 1/4" BSP x 1 1/4" BSP - no options	\$59.00

Option Price Adders		
Option	Description	List Price
By-Pass Valve Setting	All Codes	\$5.00
Gauge Port Location	Locations 1&3 or 4&6 (per set)	\$5.00
Gauge Port Location	Locations 2 or 5 (each)	\$5.00
ΔP Indicator Option	V Code	\$31.00
	E Code	\$47.00
	B Code	\$182.00

Spin-on Filter Elements		
Part Number	Description	List Price
<b>Cellulose Media</b>		
CSFE-003-069	6.9" Length, 3 Micron	\$32.00
CSFE-010-069	6.9" Length, 10 Micron	\$35.00
CSFE-025-069	6.9" Length, 25 Micron	\$25.00
CSFE-141-069	6.9" Length, 141 Micron	\$66.00
CSFE-003-109	10.9" Length, 3 Micron	\$54.00
CSFE-003-109/WA	10.9" Length, 3 Micron, Water Absorbing	\$65.00
CSFE-010-109	10.9" Length, 10 Micron	\$40.00
CSFE-010-109/WA	10.9" Length, 10 Micron, Water Absorbing	\$59.00
CSFE-025-109	10.9" Length, 25 Micron	\$39.00
CSFE-141-109	10.9" Length, 141 Micron	\$93.00

Spin-on Filter Elements		
Part Number	Description	List Price
<b>Synthetic Media</b>		
SSFE-003-067	6.7" Length, 3 Micron	\$78.00
SSFE-010-067	6.7" Length, 10 Micron	\$112.00
SSFE-025-067	6.7" Length, 25 Micron	\$78.00
SSFE-003-107	10.7" Length, 3 Micron	\$78.00
SSFE-010-107	10.7" Length, 10 Micron	\$78.00
SSFE-025-107	10.7" Length, 25 Micron	\$78.00

## Filter Heads and Elements (continued)

### Tank Top Filter Heads - Integral Breather Series

Integral Breather Tank Top Filter Heads		
Part	Description	List Price
TTF-ITB-S008-0	#8 SAE - no Dipstick	\$52.00
TTF-ITB-S012-0	#12 SAE - no Dipstick	\$69.00
TTF-ITB-B012-0	3/4" BSP - no Dipstick	\$52.00
Option Price Adders		
Dipstick	D Codes	\$19.00

Integral Breather Tank Top Filter Elements		
Part	Description	List Price
Cellulose Media		
CTTE-ITB-03N	3 Micron Nominal	\$25.00
CTTE-ITB-10N	10 Micron Nominal	\$25.00
CTTE-ITB-25N	25 Micron Nominal * Sold in multiples of 6. Non-Returnable.	\$29.00
Synthetic Media		
STTE-ITB-03A	3 Micron Absolute	Quote
STTE-ITB-10A	10 Micron Absolute	\$61.00

### Tank Top Filter Heads - Suction /Return Line Series

Suction/Return Line Tank Top Filter Heads		
Part	Description	List Price
ALUMINUM BODY		
TTF-ASR-xxx/xxx-xx-10-0	All L & R Ports - Code 10 Gauge Port Location, no Oil Fill Port	\$160.00
TTF-ASR-xxx/xxx-xx-12-0	All L & R Ports - Code 12 Gauge Port Location, no Oil Fill Port	\$165.00
TTF-ASR-xxx/xxx-xx-1P-0	All L & R Ports - Code 1P Gauge Port Location, 1 1/4" NPT Oil Fill Port	\$185.00
TTF-ASR-xxx/xxx-xx-1S-0	All L & R Ports - Code 1S Gauge Port Location, #12 SAE Oil Fill Port	\$194.00
STEEL BODY		
TTF-SSR-xxx/xxx-xx-10-0	All L & R Ports - Code 10 Gauge Port Location, no Oil Fill Port	\$160.00
TTF-SSR-xxx/xxx-xx-12-0	All L & R Ports - Code 12 Gauge Port Location, no Oil Fill Port	\$165.00
TTF-SSR-xxx/xxx-xx-1P-0	All L & R Ports - Code 1P Gauge Port Location, 1 1/4" NPT Oil Fill Port	\$165.00
TTF-SSR-xxx/xxx-xx-1S-0	All L & R Ports - Code 1S Gauge Port Location, #12 SAE Oil Fill Port	\$194.00
Option Price Adders - all bodies		
Check Valve	V Code	\$12.00

## Filter Heads and Elements (continued)

Suction/Retrun Line Tank Top Filter Elements		
Part	Description	List Price
<b>Cellulose Media for TTF-ASR Body</b>		
CTTE-ASR-003-092-BD	For Aluminum Body, 3 Micron, Bi-Directional Flow	\$29.00
CTTE-ASR-003-092-OI/WA	For Aluminum Body, 3 Micron, Outside to Inside Flow, Water Absorbing	\$38.00
CTTE-ASR-010-092-BD	For Aluminum Body, 10 Micron, Bi-Directional Flow	\$34.00
CTTE-ASR-025-092-BD	For Aluminum Body, 25 Micron, Bi-Directional Flow	\$22.00
CTTE-ASR-010-182-BD	For Aluminum Body, 10 Micron, Bi-Directional Flow	\$39.00
CTTE-ASR-025-182-BD	For Aluminum Body, 25 Micron, Bi-Directional Flow	\$39.00
CTTE-ASR-100-092-OI	For Aluminum Body, 141 Micron, Outside to Inside Flow	\$75.00
CTTE-ASR-100-092-IO	For Aluminum Body, 141 Micron, Inside to Outside Flow	\$75.00
CTTE-ASR-100-092-OI/M	For Aluminum Body, 141 Micron, Outside to Inside Flow, Magnetic	\$180.00
CTTE-ASR-100-092-IO/M	For Aluminum Body, 141 Micron, Inside to Outside Flow, Magnetic	\$180.00
CTTE-ASR-100-182-OI	For Aluminum Body, 141 Micron, Outside to Inside Flow	\$145.00
<b>Synthetic Media for TTF-ASR Body</b>		
STTE-ASR-003-092-OI	For Aluminum Body, 3 Micron, Outside to Inside Flow	\$98.00
STTE-ASR-010-092-OI	For Aluminum Body, 10 Micron, Outside to Inside Flow	\$73.00
STTE-ASR-003-182-OI	For Aluminum Body, 3 Micron, Outside to Inside Flow	\$183.00
STTE-ASR-010-182-OI	For Aluminum Body, 10 Micron, Outside to Inside Flow	\$164.00
<b>Cellulose Media for TTF-SSR Body</b>		
CTTE-SSR-003-092-BD	For Steel Body, 3 Micron, Bi-Directional Flow	\$28.00
CTTE-SSR-010-092-BD	For Steel Body, 10 Micron, Bi-Directional Flow	\$23.00
CTTE-SSR-010-092-IO/WA	For Steel Body, 10 Micron, Outside to Inside Flow, Water Absorbing	\$35.00
CTTE-SSR-025-092-BD	For Steel Body, 25 Micron, Bi-Directional Flow	\$23.00
CTTE-SSR-010-182-BD	For Steel Body, 10 Micron, Bi-Directional Flow	\$41.00
CTTE-SSR-025-182-BD	For Steel Body, 25 Micron, Bi-Directional Flow	\$41.00
CTTE-SSR-100-092-OI	For Steel Body, 141 Micron, Outside to Inside Flow	\$75.00
CTTE-SSR-100-092-IO	For Steel Body, 141 Micron, Inside to Outside Flow	\$75.00
CTTE-SSR-100-092-OI/M	For Steel Body, 141 Micron, Outside to Inside Flow, Magnetic	\$184.00
CTTE-SSR-100-092-IO/M	For Steel Body, 141 Micron, Inside to Outside Flow, Magnetic	\$184.00
<b>Synthetic Media for TTF-SSR Body</b>		
STTE-SSR-003-092-OI	For Steel Body, 3 Micron, Outside to Inside Flow	\$98.00
STTE-SSR-010-092-OI	For Steel Body, 10 Micron, Outside to Inside Flow	\$72.00
STTE-SSR-003-182-OI	For Steel Body, 3 Micron, Outside to Inside Flow	\$189.00
STTE-SSR-010-182-OI	For Steel Body, 10 Micron, Outside to Inside Flow	\$164.00

## Pressure Gauges

Pressure Gauges		
Part	Description	List Price
LFPG-208-xxx-04N/BS	2 1/2" Gauge, All Dial Ranges, 1/4" NPT Bottom Stem	\$46.00
LFPG-208-xxx-04N/RS	2 1/2" Gauge, All Dial Ranges, 1/4" NPT Rear Stem	\$59.00
LFPG-400-xxx-04N/BS	4" Gauge, All Dial Ranges, 1/4" NPT Bottom Stem	\$105.00
LFPG-400-xxx-08N/BS	4" Gauge, All Dial Ranges, 1/2" NPT Bottom Stem	\$79.00
LFPG-400-xxx-04N/RS	4" Gauge, All Dial Ranges, 1/4" NPT Rear Stem	\$89.00



## Gauge Isolators

Part	Description	List Price
GI-01-SAE	Single Station - SAE	\$176.00
GI-01-NPT	Single Station - NPT	\$176.00
GI-06-SAE	Six Station - SAE	\$243.00

## Pressure Switches

Part	Description	List Price
PS-400-115	Single Switch	\$72.00
PS-400-215	Double Switch	\$105.00
PS-400-315	Triple Switch*	Not Avail.
Options		
L or H Code	High or Low Pressure Rated Spring	\$7.00
	Pre-Set Pressrue Settings	\$7.00

\* The Triple Pressure Switch part number PS-400-315 has been discontinued. 1/23/17

## Liquid Level Gauges

Liquid Level Gauges		
Part	Description	List Price
Standard Series		
SLLG-03T	3" Standard Gauge w/Temp	\$27.00
SLLG-03T-C	3" Standard Gauge w/Temp & Cover	\$36.00
SLLG-05T	5" Standard Gauge w/Temp	\$32.00
SLLG-05T-C	5" Standard Gauge w/Temp & Cover	\$41.00
SLLG-10T	10" Standard Gauge w/Temp	\$45.00
SLLG-10T-C	10" Standard Gauge w/Temp & Cover	\$55.00
Premium Series		
PLLG-03T	3" Premium Gauge w/Temp	\$50.00
PLLG-05T	5" Premium Gauge w/Temp	\$66.00
PLLG-10T	10" Premium Gauge w/Temp	\$91.00
Sight Glass Series		
SLSG-100	1 1/4" Nylon Sight Glass	\$12.00

## Motor Base Plates

Part	Description	List Price
MBP-056/184	056C thru 184TC Base Plate	\$50.00
MBP-213/256	213TC thru 256TC Base Plate	\$69.00
MBP-284/326	284TC/TSC thru 326TC/TSC Base Plate	\$78.00

## NEMA Motor Dampening Bars

Part	Description	List Price
<b>Bolt Down Series</b>		
MDB056-B	056C Motor Frame	\$212.00
MDB143-B	143TC Motor Frame	\$216.00
MDB145-B	145TC Motor Frame	\$220.00
MDB182-B	182TC Motor Frame	\$220.00
MDB184-B	184TC Motor Frame	\$220.00
MDB213-B	213TC Motor Frame	\$261.00
MDB215-B	215TC Motor Frame	\$278.00
MDB254-B	254TC Motor Frame	\$286.00
MDB256-B	256TC Motor Frame	\$318.00
MDB284-B	284TC Motor Frame	\$401.00
MDB286-B	286TC Motor Frame	\$466.00
MDB324-B	324TC Motor Frame	\$580.00
MDB326-B	326TC Motor Frame	\$580.00
MDB364-B	364TC Motor Frame	\$580.00
MDB365-B	365TC Motor Frame	\$622.00
MDB404-B	404TC Motor Frame	\$635.00
MDB405-B	405TC Motor Frame	\$761.00
MDB444-B	444TC Motor Frame	\$936.00
MDB445-B	445TC Motor Frame	\$936.00
MDB447-B	447TC Motor Frame	Quote
MDB449-B	449TC Motor Frame	Quote

Part	Description	List Price
<b>Weld Series</b>		
MDB056-W	056C Motor Frame	\$140.00
MDB143-W	143TC Motor Frame	\$146.00
MDB145-W	145TC Motor Frame	\$157.00
MDB182-W	182TC Motor Frame	\$157.00
MDB184-W	184TC Motor Frame	\$163.00
MDB213-W	213TC Motor Frame	\$192.00
MDB215-W	215TC Motor Frame	\$209.00
MDB254-W	254TC Motor Frame	\$232.00
MDB256-W	256TC Motor Frame	\$251.00
MDB284-W	284TC Motor Frame	\$366.00
MDB286-W	286TC Motor Frame	\$366.00
MDB324-W	324TC Motor Frame	\$466.00
MDB326-W	326TC Motor Frame	\$512.00
MDB364-W	364TC Motor Frame	\$512.00
MDB365-W	365TC Motor Frame	\$512.00
MDB404-W	404TC Motor Frame	\$561.00
MDB405-W	405TC Motor Frame	\$635.00
MDB444-W	444TC Motor Frame	\$844.00
MDB445-W	445TC Motor Frame	\$844.00
MDB447-W	447TC Motor Frame	Quote
MDB449-W	449TC Motor Frame	Quote

## IEC Motor Dampening Bars

Part	Description	List Price
<b>Bolt Down Series</b>		
MDB071-B	IEC 71 Motor Size	\$264.00
MDB080-B	IEC 80 Motor Size	\$264.00
MDB090S-B	IEC 90 S Motor Size	\$286.00
MDB090L-B	IEC 90 L Motor Size	\$286.00
MDB100L-B	IEC 100 L Motor Size	\$286.00
MDB112M-B	IEC 112 M Motor Size	\$286.00
MDB132S-B	IEC 132 S Motor Size	\$333.00
MDB132M-B	IEC 132 M Motor Size	\$348.00
MDB160M-B	IEC 160 M Motor Size	\$361.00
MDB160L-B	IEC 160 L Motor Size	\$754.00
MDB180M-B	IEC 180 M Motor Size	\$754.00
MDB180L-B	IEC 180 L Motor Size	\$754.00
MDB200L-B	IEC 200 L Motor Size	\$762.00
MDB225S-B	IEC 225 S Motor Size	\$795.00
MDB225M-B	IEC 225 M Motor Size	\$795.00
MDB250M-B	IEC 250 M Motor Size	\$859.00
MDB280S-B	IEC 280 S Motor Size	\$1,122.00
MDB280M-B	IEC 280 M Motor Size	\$1,122.00
MDB315S-B	IEC 315 S Motor Size	\$1,171.00
MDB315M-B	IEC 315 M Motor Size	\$1,171.00
MDB315L-B	IEC 315 L Motor Size	\$1,171.00

Part	Description	List Price
<b>Weld Series</b>		
MDB071-W	IEC 71 Motor Size	\$189.00
MDB080-W	IEC 80 Motor Size	\$189.00
MDB090S-W	IEC 90 S Motor Size	\$205.00
MDB090L-W	IEC 90 L Motor Size	\$205.00
MDB100L-W	IEC 100 L Motor Size	\$205.00
MDB112M-W	IEC 112 M Motor Size	\$205.00
MDB132S-W	IEC 132 S Motor Size	\$271.00
MDB132M-W	IEC 132 M Motor Size	\$271.00
MDB160M-W	IEC 160 M Motor Size	\$440.00
MDB160L-W	IEC 160 L Motor Size	\$606.00
MDB180M-W	IEC 180 M Motor Size	\$606.00
MDB180L-W	IEC 180 L Motor Size	\$606.00
MDB200L-W	IEC 200 L Motor Size	\$672.00
MDB225S-W	IEC 225 S Motor Size	\$672.00
MDB225M-W	IEC 225 M Motor Size	\$672.00
MDB250M-W	IEC 250 M Motor Size	\$701.00
MDB280S-W	IEC 280 S Motor Size	\$1,057.00
MDB280M-W	IEC 280 M Motor Size	\$1,013.00
MDB315S-W	IEC 315 S Motor Size	\$1,013.00
MDB315M-W	IEC 315 M Motor Size	\$1,057.00
MDB315L-W	IEC 315 L Motor Size	\$1,057.00

# Reservoir Accessories / Rod End Couplers



## Modular O-Ring Kits

Part	Description	List Price
ORK-12000	Buna O-Ring Kit	\$599.00
ORK-12001	Viton O-Ring Kit	\$1,654.00

## Motor Dampening Bar Weld Pad Kits\*

Part	Description	List Price
MWP056-256	056C thru 256TC Motor Frames	\$64.00
MWP284-286	284TC/TSC thru 286TC/TSC Motor Frames	\$92.00
MWP324-365	324TC/TSC thru 365TC/TSC Motor Frames	\$92.00
MWP404-405	404TC/TSC thru 405TC/TSC Motor Frames	\$108.00
MWP444-449	444TC/TSC thru 449TC/TSC Motor Frames	\$128.00
MWP071-132M	IEC 071 thru IEC 132 M Motor Size	Quote
MWP160M-180L	IEC 160 M thru IEC 180 L Motor Size	Quote
MWP200L-315L	IEC 200 L thru IEC 315 L Motor Size	Quote

\* Kit includes 4 Weld Pads only.  
Order Bolt Down Series Dampening  
Bars separately

## Rod End Couplers

M-Series Rod End Couplers		
Part	Description	List Price
M010-01024	M Series 5/16-24 Thread	\$42.00
M010-01224	M Series 3/8-24 Thread	\$43.00
M015-01420	M Series 7/16-20 Thread	\$41.00
M015-01620	M Series 1/2-20 Thread	\$42.00
M020-02018	M Series 5/8-18 Thread	\$72.00
M020-02416	M Series 3/4-16 Thread	\$70.00
M020-02814	M Series 7/8-14 Thread	\$72.00
M030-10014	M Series 1-14 Thread	\$111.00
M040-10812	M Series 1 1/4-12 Thread	\$175.00
M050-11612	M Series 1 1/2-12 Thread	\$293.00
M050-12412	M Series 1 3/4-12 Thread	\$293.00
M060-12812	M Series 1 7/8-12 Thread	\$448.00
M060-20012	M Series 2-12 Thread	\$426.00
M070-20812	M Series 2 1/4-12 Thread	\$951.00
M080-21612	M Series 2 1/2-12 Thread	\$1,250.00
M080-22412	M Series 2 3/4-12 Thread	\$1,250.00
M080-30012	M Series 3-12 Thread	\$1,250.00
M100-30812	M Series 3 1/4-12 Thread	Quote
M140-40812	M Series 4 1/4-12 Thread	Quote

R-Series Rod End Couplers		
Part	Description	List Price
R010-01024	R Series 5/16-24 Thread	\$38.00
R010-01224	R Series 3/8-24 Thread	\$38.00
R020-01420	R Series 7/16-20 Thread	\$40.00
R020-01620	R Series 1/2-20 Thread	\$40.00
R020-02018	R Series 5/8-18 Thread	\$55.00
R030-02416	R Series 3/4-16 Thread	\$62.00
R030-02814	R Series 7/8-14 Thread	\$62.00
R040-10014	R Series 1-14 Thread	\$104.00
R040-10812	R Series 1 1/4-12 Thread	\$136.00

For Availability of Other Series / Thread Combinations,  
Consult Factory

# Make the Connection with **magnaloy**

Whatever your Fluid Power Unit needs, Magnaloy has the products to keep you connected.



## Flexible Drive Couplings

Top-of-the-line magnesium couplings are lighter, yet stronger than either cast iron or aluminum. They also offer better corrosion resistance and easier handling.

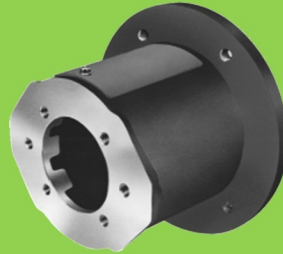


## Magnaloy Hydraulic Bar Manifolds & Accessories

Complete line of Inline Bar Manifolds, Subplates, Cover Plates, Valve Adaptors, Integrated Circuit Manifolds, and Accessories to make the design and fabrication of Hydraulic Circuitry simple and easy. Wide range of sizes include: D03, D05, D05H & D08 in aluminum and steel with ports available in SAE, NPTF, BSPP, and BSPT styles. Custom design and fabrication also available, consult factory.

## Accessories

Filler Breather Adaptors, Filler Breathers, Reservoir Flanges, Suction Strainers, Gauge Isolators, Liquid Level Gauges, Modular O-Ring Kits.



## Pump/Motor Mounts

Precision machined aluminum & custom steel pump/motor mounts directly connect the motor and pump while ensuring accurate shaft alignment and enclosing the coupling. Vertical and horizontal models readily available from stock.



## Rod End Couplers

Two models of accurately machined high tensile cylinder rod end alignment couplers offer 7° or 10° spherical and 1/8" parallel misalignment capabilities.



## PM 90 Couplings

Economical PM-90 Iron Powder Couplings have long lasting nitrile, hytel or urethane inserts. Double set screws give excellent gripping power.



## Magnaloy Reservoirs & Reservoir Accessories

Pressure Magnaloy offers a complete line of standard reservoirs and reservoir accessories. In addition, we offer custom reservoir fabrication to meet our customer specific needs. Reservoir accessories such as Clean Out Covers and SAE Couplings are available for the "do-it-yourself" reservoir manufacturer.



## Magnaloy Pressure Switch

Pressure Sensing switch capable of sensing up to two (2) separate pressures. Each sensor is externally independently adjustable from 200 to 4000 psi. Viton seals provide wide fluid compatibility range.