



**LIST PRICES**  
 Effective May 6, 2024  
 Subject to change  
 without notice

**Flexible Drive Couplings, PM 90 Couplings  
 Price List**

**Product/Price Index**

PREMIUM FLEXIBLE  
 DRIVE COUPLINGS..... 1  
 PM 90 COUPLINGS..... 3



Coupling Model No.	Std. Max Bore	Hub Only Bored & Keyed	Hub Only No Bore
100	1 1/8	\$29.00	\$24.00
200	1 3/8	\$32.00	\$26.00
300	1 5/8	\$41.00	\$37.00
400	1 7/8	\$58.00	\$54.00
500	2 3/8	\$81.00	\$75.00
600	2 5/8	\$125.00	\$109.00
700	2 7/8	\$205.00	\$187.00
800	3 7/8	\$379.00	\$351.00
900	4 3/4	\$1,172.00	\$1,048.00

**PART NUMBER USAGE:**

Magnaloy Coupling INSERT part numbers may be specified using the following format:

Start with the Basic Insert Part Number followed by the 2 digit material code. **ie. M170U9**

Basic Insert Part No.	Neoprene		Urethane		Viton		Hytrel		Buna N		EPDM	
	Code	List Price	Code	List Price	Code	List Price	Code	List Price	Code	List Price	Code	List Price
M170	N6	\$6.00	U9	\$13.00	V8	\$44.00	H5	\$14.00	B8	\$10.00	E8	\$18.00
M270	N6	\$10.00	U9	\$15.00	V8	\$59.00	H5	\$16.00	B8	\$13.00	E8	\$37.00
M370	N6	\$13.00	U9	\$19.00	V8	\$70.00	H5	\$20.00	B8	\$16.00	E8	\$39.00
M470	N7	\$15.00	U9	\$26.00	V8	\$104.00	H5	\$28.00	B8	\$21.00	E8	\$41.00
M570	N7	\$19.00	U9	\$32.00	V8	\$182.00	H5	\$37.00	B8	\$26.00	E8	\$54.00
M670	N7	\$27.00	U9	\$58.00	V8	\$224.00	H5	\$63.00	B8	\$35.00	E8	\$79.00
M770	N8	\$51.00	U9	\$88.00	V8	\$497.00	H5	\$91.00	B8	\$104.00	E8	\$126.00
M870	N8	\$140.00	U9	\$142.00	V8	\$1,116.00	H5	\$149.00	B8	\$174.00	E8	\$230.00
M970	N8	\$160.00	U9	\$431.00	V8	\$3,111.00	H5	N/A	B8	N/A	E8	N/A

*Shaded Area - Semi Standard  
No Additional Cost*

Magnaloy "Standard" Bore & Keyway Combinations									
Model Code Bore/Key	Bore & Key	100	200	300	400	500	600	700	800
M__01203	3/8 x 3/32	o	o						
M__01403	7/16 x 3/32	o	o						
M__01404	7/16 x 1/8	o	o						
M__01604	1/2 x 1/8	o	o	o					
M__01804	9/16 x 1/8	o	o	o					
M__02005	5/8 x 5/32	o	o	o					
M__02006	5/8 x 3/16	o	o	o	o				
M__02206	11/16 x 3/16	o	o	o	o				
M__02404	3/4 x 1/8	o	o	o					
M__02406	3/4 x 3/16	o	o	o	o	o	o		
M__02806	7/8 x 3/16	o	o	o	o	o	o		
M__02808	7/8 x 1/4	o	o	o	o	o	o		
M__03008	15/16 x 1/4	o	o	o					
M__10006	1 x 3/16	o	o	o	o	o	o		
M__10008	1 x 1/4	o	o	o	o	o	o		
M__10408	1 1/8 x 1/4	o	o	o	o	o	o		
M__10608	1 3/16 x 1/4			o	o				
M__10808	1 1/4 x 1/4		o	o	o	o	o		
M__10810	1 1/4 x 5/16		o	o	o	o	o	o	o
M__11210	1 3/8 x 5/16		o	o	o	o	o	o	o
M__11212	1 3/8 x 3/8			o					
M__11412	1 7/16 x 3/8			o	o	o			
M__11610	1 1/2 x 5/16			o	o	o	o		
M__11612	1 1/2 x 3/8			o	o	o	o	o	o
M__12012	1 5/8 x 3/8			o	o	o	o	o	o
M__12412	1 3/4 x 3/8				o	o	o	o	o

Magnaloy "Standard" Bore & Keyway Combinations									
Model Code Bore/Key	Bore & Key	200	300	400	500	600	700	800	900
M 12414	1 3/4 x 7/16			o	o	o	o	o	
M 12816	1 7/8 x 1/2			o	o	o	o	o	o
M 13016	1 15/16 x 1/2				o	o			
M 20016	2 x 1/2				o	o	o	o	o
M 20416	2 1/8 x 1/2				o	o	o	o	o
M 20816	2 1/4 x 1/2				o	o	o	o	o
M 21220	2 3/8 x 5/8				o	o	o	o	o
M 21620	2 1/2 x 5/8					o	o	o	o
M 22020	2 5/8 x 5/8					o	o	o	o
M 22420	2 3/4 x 5/8						o	o	o
M 22824	2 7/8 x 3/4						o	o	o
M 30024	3 x 3/4							o	o
M 30824	3 1/4 x 3/4							o	o
M 31228	3 3/8 x 7/8							o	o
M 31628	3 1/2 x 7/8							o	o
M 32028	3 5/8 x 7/8							o	o
M 32428	3 3/4 x 7/8							o	o
M 32832	3 7/8 x 1							o	o
M 40032	4 x 1								o
M 40432	4 1/8 x 1								o
M 40832	4 1/4 x 1								o
M 41232	4 3/8 x 1								o
M 41632	4 1/2 x 1								o
M 41640	4 1/2 x 1 1/4								o
M 42040	4 5/8 x 1 1/4								o
M 42440	4 3/4 x 1 1/4								o

**PART NUMBER USAGE:** Magnaloy Coupling HUB part numbers may be specified using the following format: Start with letter "M" designating Magnaloy, followed by 3 digit Model Code (100, 200, 300, etc), the the specific 5 digit Bore Key Code.

# Splined Bore, Steel Bushings & Clamps



## Special Bores & Double Set Screws

Coupling Model No.	* Special & Metric Bore	Double Set Screws
100	\$43.00	\$31.00
200	\$44.00	\$33.00
300	\$55.00	\$44.00
400	\$77.00	\$62.00
500	\$103.00	\$86.00
600	\$157.00	\$129.00
700	\$242.00	\$214.00
800	\$417.00	\$388.00
900	\$1,217.00	\$1,182.00

**SPECIAL SERVICES for special machining services**, ie.: taper bores, snap ring grooves, facing, special sized keyways, and couplings altered by factory per customer specifications, consult factory. Factory will also consider bores greater than the standard maximum for

\* **Special and Metric** charges for Special Bores, Non-Standard Bore and Keyway Combinations, Standard Metric Bore & Keyways, and Bores

## Splined Bores, Steel Bushing and Clamps

Coupling Model Size	Stock Model Sizes							
	Standard Coupling		Group A		Group B		Group C	
	Splined Bore	Splined Bore w/Clamp	Steel Bushed	Steel Bushed w/Clamp	Steel Bushed	Steel Bushed w/Clamp	Steel Bushed	Steel Bushed w/Clamp
100	\$62.00	\$107.00	N/A	N/A	N/A	N/A	N/A	N/A
200	\$62.00	\$103.00	\$141.00	\$195.00	N/A	N/A	N/A	N/A
300	\$74.00	\$115.00	\$153.00	\$207.00	N/A	N/A	N/A	N/A
400	\$91.00	\$131.00	\$170.00	\$224.00	N/A	N/A	N/A	N/A
500	\$110.00	\$153.00	\$196.00	\$255.00	\$212.00	\$270.00	N/A	N/A
600	\$158.00	\$208.00	\$242.00	\$305.00	\$257.00	\$322.00	N/A	N/A
700	\$237.00	\$288.00	QUOTE	QUOTE	\$338.00	\$403.00	N/A	N/A
800	\$582.00	\$633.00	QUOTE	QUOTE	\$515.00	\$580.00	\$580.00	\$645.00
900	N/A	QUOTE	QUOTE	QUOTE	QUOTE	QUOTE	QUOTE	QUOTE

Note: For Non-Stock Size Splines add to Special Bore Price: \$150.00

**Splined Bores:** The following IN-Plant brochures are all 30° A.P., Flat Root, Side Fit. For other splines, consult

Number of Teeth	Pitch	Pressure Angle (Degrees)	SAE Designation	Major Diameter (Inches)	Standard Coupling		Steel Bushed Coupling		Size Group
					Available Model Sizes	Stock Model Sizes1	Available Model Sizes	Stock Model Sizes1	
9	16/32	30	A	0.625	100-900	100-400	200-900	200-400	A
13	8/16	30	D, E	1.75	400-900	400-700	600-900	600-800	B
13	16/32	30	B	0.875	100-900	100-500	300-900	300-500	A
14	12/24	30	C	1.25	200-900	200-700	500-900	500-700	B
15	16/32	30	BB	1	100-900	300-500	400-900	400-600	A
15	8/16	30	F	2	500-900	500-700	800-900	800	C
17	12/24	30	CC	1.5	300-900	500-700	500-900	500-800	B
21	16/32	30		1.375	300-900	300-600	500-900	500, 600	B
23	16/32	30		1.5	300-900	500-600	500-900	500-700	B
27	16/32	30		1.75	400-900	500-700	600-900	600, 800	B
40	16/32	30		2.562	600-900	NONE	800-900	NONE	C

1 Above prices are for splined bores in STOCK MODEL SIZES only - for other model sizes, consult factory.

	Hub Only
Standard Bore/Key	\$14.00
Semi-Standard Bore/Key*	\$26.00

\* Semi-Standard Bore/Key combinations are shown as shaded in the chart below. For quantities greater than 50 pieces, consult factory. All other Bore/Key combinations, consult factory for price and availability. Other Bore/Keyway combinations available - consult factory for price and availability.

### Inserts

Insert Part No.	Insert Material	List Price
P097N7	Nitrile	\$5.00
P097U9	Urethane	\$10.00
P097H5	Hytrel	\$11.00
P097V8	Viton	\$40.00

### Standard Bore/Keyway Combinations available with PM 90 Model Coupling

Part Number	Bore	Number of Set Screws *	Set Screw Size
P090014N	7/16 - No Keyway	Single Set Screw	1/4 - 20 UNC
P09001403	7/16 x 3/32	Single Set Screw	1/4 - 20 UNC
P09001404	7/16 x 1/8	Single Set Screw	1/4 - 20 UNC
P09001604	1/2 x 1/8	Double Set Screw	1/4 - 20 UNC
P09001804	9/16 x 1/8	Double Set Screw	1/4 - 20 UNC
P09002005	5/8 x 5/32	Double Set Screw	1/4 - 20 UNC
P09002006	5/8 x 3/16	Double Set Screw	1/4 - 20 UNC
P09002206	11/16 x 3/16	Double Set Screw	1/4 - 20 UNC
P09002404	3/4 x 1/8	Double Set Screw	1/4 - 20 UNC
P09002406	3/4 x 3/16	Double Set Screw	1/4 - 20 UNC
P09002806	7/8 x 3/16	Double Set Screw	1/4 - 20 UNC
P09002808	7/8 x 1/4	Double Set Screw	1/4 - 20 UNC
P09010006	1 x 3/16	Double Set Screw	1/4 - 20 UNC
P09010008	1 x 1/4	Double Set Screw	1/4 - 20 UNC
P09010408	1 1/8 x 1/4	Double Set Screw	1/4 - 20 UNC

*Shaded items above are Semi-Standard for PM90 Couplings*

\* Double set screws are located over the keyway and 45° from the keyway on all bores 1/2 inch and over. Under 1/2 inch a single set screw is located between drive lugs, over keyway.

#### ORDERING INFORMATION:

When ordering Type PM Couplings, order by Hub and Insert (ie. 2 hubs and 1 insert equal a complete coupling). Specify quantity and part number or type, model size, and bore & keyway for each hub, and quantity and part number or type, model size and material for each insert.

- IE. 35 P09002006 or PM 90 Hub 5/8 x 3/16
- 35 P09010408 or PM 90 Hub 1 1/8 x 1/4
- 35 P097N7 or PM 97 Insert - Nitrile 70 Durometer



# Make the Connection with **magnaloy**

Whatever your Fluid Power Unit needs, Magnaloy has the products to keep you connected.



## Flexible Drive Couplings

Top-of-the-line magnesium couplings are lighter, yet stronger than either cast iron or aluminum. They also offer better corrosion resistance and easier handling.

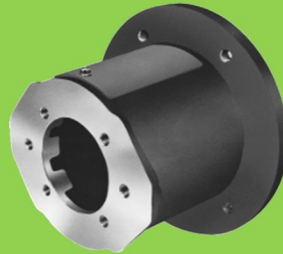


## Magnaloy Hydraulic Bar Manifolds & Accessories

Complete line of Inline Bar Manifolds, Subplates, Cover Plates, Valve Adaptors, Integrated Circuit Manifolds, and Accessories to make the design and fabrication of Hydraulic Circuitry simple and easy. Wide range of sizes include: D03, D05, D05H & D08 in aluminum and steel with ports available in SAE, NPTF, BSPP, and BSPT styles. Custom design and fabrication also available, consult factory.

## Accessories

Filler Breather Adaptors, Filler Breathers, Reservoir Flanges, Suction Strainers, Gauge Isolators, Liquid Level Gauges, Modular O-Ring Kits.



## Pump/Motor Mounts

Precision machined aluminum & custom steel pump/motor mounts directly connect the motor and pump while ensuring accurate shaft alignment and enclosing the coupling. Vertical and horizontal models readily available from stock.



## Rod End Couplers

Two models of accurately machined high tensile cylinder rod end alignment couplers offer 7° or 10° spherical and 1/8" parallel misalignment capabilities.



## PM 90 Couplings

Economical PM-90 Iron Powder Couplings have long lasting nitrile, hytrel or urethane inserts. Double set screws give excellent gripping power.



## Magnaloy Reservoirs & Reservoir Accessories

Pressure Magnaloy offers a complete line of standard reservoirs and reservoir accessories. In addition, we offer custom reservoir fabrication to meet our customer specific needs. Reservoir accessories such as Clean Out Covers and SAE Couplings are available for the "do-it-yourself" reservoir manufacturer.



## Magnaloy Pressure Switch

Pressure Sensing switch capable of sensing up to two (2) separate pressures. Each sensor is externally independently adjustable from 200 to 4000 psi. Viton seals provide wide fluid compatibility range.

Magnaloy coupling company 170 N Industrial Hwy., Alpena, MI 49707 989-356-2186

A Division of Douville Johnston Corporation

Fax: 989-354-4190 www.magnaloy.com

**B**