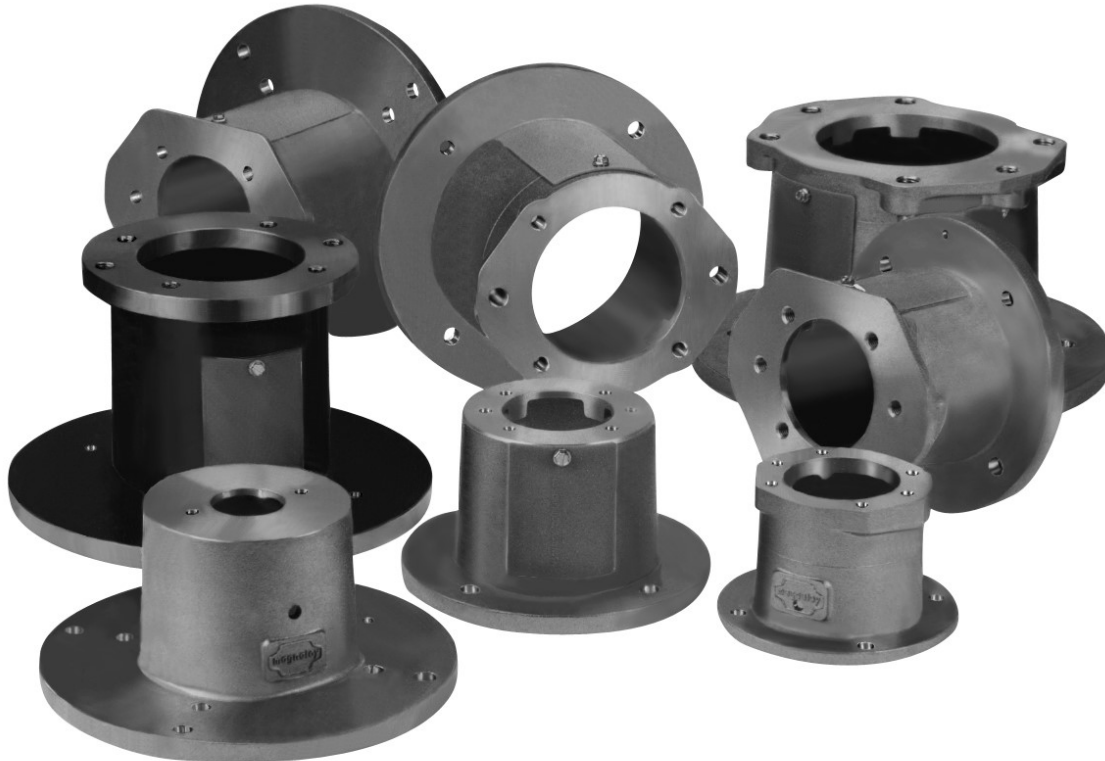




LIST PRICES
 Effective April 17, 2023
 Subject to change
 without notice

**Pump/Motor Mounts
 Price List**



Product/Price Index

HORIZONTAL ALUMINUM
 PUMP/MOTOR MOUNTS..... 1

VERTICAL ALUMINUM PUMP/
 MOTOR MOUNTS..... 3

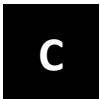
ALUMINUM PUMP/ENGINE
 MOUNT..... 4

WELDED STEEL HORIZONTAL
 MOUNT..... 5

WELDED STEEL PUMP/ENGINE
 MOUNTS..... 5

WELDED STEEL VERTICAL
 PUMP/MOTOR MOUNTS..... 6

SERVICE WINDOW COVERS.... 7



Cast Aluminum Horizontal Mounts

NEMA Frame Motors

Part Number	Approx. Weight	List Price
M056354F	2.5#	\$54.00
M056352AA	2.5#	\$54.00
M056352A	2.0#	\$54.00
M0563563M(S)	2.0#	\$94.00
M0563580M(S)	2.0#	\$94.00
M056424F	3.0#	\$54.00
M056422AA	2.5#	\$54.00
M056422A	2.5#	\$54.00
M0564263M(S)	2.5#	\$94.00
M0564280M(S)	2.5#	\$94.00
M056454F	3.0#	\$54.00
M056452AA	3.0#	\$54.00
M056452A	2.5#	\$54.00
M0564563M(S)	2.5#	\$94.00
M0564580M(S)	2.5#	\$94.00
M056504F	3.0#	\$94.00
M056502AA	3.0#	\$94.00
M056502A	3.5#	\$94.00
M056502B	3.0#	\$99.00
M0565063M(S)	3.5#	\$135.00
M0565080M(S)	3.5#	\$135.00
M05650100M	3.0#	\$135.00
M056524F	4.5#	\$99.00
M056522AA	4.5#	\$99.00
M056522A	4.0#	\$99.00
M056522B	4.0#	\$104.00
M0565263M(S)	4.0#	\$135.00
M0565280M(S)	4.0#	\$135.00
M05652100M	3.5#	\$135.00
M182474F	5.0#	\$88.00
M182472AA	5.0#	\$88.00
M182472A	4.5#	\$88.00
M1824763M(S)	4.0#	\$142.00
M1824780M(S)	4.0#	\$142.00
M182504F	5.0#	\$75.00
M182502AA	5.0#	\$75.00
M182502A	4.5#	\$75.00
M1825063M(S)	4.0#	\$142.00
M1825080M(S)	4.0#	\$142.00

Part Number	Approx. Weight	List Price
M182524F	5.0#	\$75.00
M182522AA	5.0#	\$75.00
M182522A	5.0#	\$75.00
M182522B	5.5#	\$81.00
M182522C	5.0#	\$86.00
M1825263M(S)	5.0#	\$142.00
M1825280M(S)	5.0#	\$142.00
M18252100M	5.5#	\$142.00
M18252125M	5.0#	\$142.00
M182584F	5.0#	\$86.00
M182582AA	5.0#	\$86.00
M182582A	5.0#	\$86.00
M182582B	6.0#	\$86.00
M182582C	5.5#	\$98.00
M1825863M(S)	5.0#	\$142.00
M1825880M(S)	5.0#	\$142.00
M18258100M	6.0#	\$142.00
M18258125M	5.0#	\$142.00
M182602B	6.0#	\$98.00
M182602C	6.0#	\$103.00
M18260100M	6.0#	\$158.00
M18260125M	5.5#	\$158.00
M182684F	5.0#	\$94.00
M182682AA	5.0#	\$94.00
M182682A	5.5#	\$94.00
M182682B	6.0#	\$98.00
M182682C	6.0#	\$103.00
M1826863M(S)	5.5#	\$158.00
M1826880M(S)	5.5#	\$158.00
M18268100M	6.0#	\$158.00
M18268125M	6.0#	\$158.00
M182702B	6.0#	\$110.00
M182702C	6.0#	\$110.00
M18270100M	6.0#	\$176.00
M18270125M	6.0#	\$176.00

Part Number	Approx. Weight	List Price
M284682A	9.0#	\$171.00
M284682B	8.5#	\$171.00
M284682C	8.0#	\$171.00
M2846863M(S)	9.0#	\$223.00
M2846880M(S)	9.0#	\$223.00
M28468100M	8.5#	\$223.00
M28468125M	8.0#	\$223.00
M284752A	9.0#	\$179.00
M284752B	9.0#	\$179.00
M284752C	8.5#	\$179.00
M2847563M(S)	9.0#	\$231.00
M2847580M(S)	9.0#	\$231.00
M28475100M	9.0#	\$231.00
M28475125M	8.5#	\$231.00
M284862A	9.0#	\$187.00
M284862B	9.5#	\$187.00
M284862C	9.0#	\$187.00
M2848663M(S)	9.0#	\$244.00
M2848680M(S)	9.0#	\$244.00
M28486100M	9.5#	\$244.00
M28486125M	9.0#	\$244.00
M324762B	16.5#	\$305.00
M324762C	16.0#	\$305.00
M324762D	16.5#	\$305.00
M32476PVR50	16.0#	\$324.00
M32476100M	16.5#	\$368.00
M32476125M	16.0#	\$368.00
M32476160M	15.5#	\$368.00
M32476180M	15.0#	\$368.00
M324872B	18.0#	\$343.00
M324872C	17.5#	\$343.00
M324872D	17.0#	\$349.00
M32487PVR50	17.0#	\$343.00
M32487100M	18.0#	\$424.00
M32487125M	17.0#	\$424.00
M32487160M	17.0#	\$424.00
M32487180M	16.5#	\$424.00

Magnaloy Cast Aluminum Pump/Motors include mounting bolts and washers required to install the pump and motor to the Magnaloy mount. All Magnaloy Pump/Motor Mounts are machined with pump mounting holes to accommodate either 2 bolt or 4 bolt configurations.

Cast Aluminum Horizontal Mounts

IEC Frame Motors

Part Number	Approx. Weight	List Price
M130ML504F	3.0#	\$175.00
M130ML502AA	3.0#	\$175.00
M130ML502A	3.5#	\$175.00
M130ML502B	3.0#	\$209.00
M130ML5063M(S)	3.0#	\$248.00
M130ML5080M(S)	3.5#	\$248.00
M130ML50100M	3.0#	\$248.00
M130ML524F	4.5#	\$179.00
M130ML522AA	4.5#	\$179.00
M130ML522A	4.0#	\$179.00
M130ML522B	4.0#	\$215.00
M130ML5263M(S)	4.5#	\$250.00
M130ML5280M(S)	4.0#	\$250.00
M130ML52100M	3.5#	\$250.00
M180ML504F	7.5#	\$159.00
M180ML502AA	7.5#	\$159.00
M180ML502A	7.0#	\$159.00
M180ML5063M(S)	7.5#	\$225.00
M180ML5080M(S)	7.0#	\$225.00
M180ML524F	7.5#	\$159.00
M180ML522AA	7.5#	\$159.00
M180ML522A	7.0#	\$159.00
M180ML5263M(S)	7.5#	\$225.00
M180ML5280M(S)	7.0#	\$225.00
M180ML552B	5.5#	\$172.00
M180ML552C	5.0#	\$172.00
M180ML55100M	5.0#	\$244.00
M180ML55125M	5.0#	\$244.00
M180ML604F	7.0#	\$163.00
M180ML602AA	7.0#	\$163.00
M180ML602A	7.0#	\$163.00
M180ML602B	8.0#	\$203.00
M180ML602C	7.5#	\$203.00
M180ML6063M(S)	7.0#	\$252.00
M180ML6080M(S)	7.0#	\$252.00
M180ML60100M	8.0#	\$292.00
M180ML60125M	7.5#	\$292.00
M180ML704F	7.5#	\$231.00
M180ML702AA	7.5#	\$231.00
M180ML702A	7.0#	\$231.00
M180ML702B	8.5#	\$238.00
M180ML702C	8.0#	\$238.00
M180ML7063M(S)	7.5#	\$326.00
M180ML7080M(S)	7.0#	\$326.00
M180ML70100M	8.5#	\$326.00
M180ML70125M	8.0#	\$326.00

Part Number	Approx. Weight	List Price
M180ML722B	9.0#	\$238.00
M180ML722C	8.5#	\$238.00
M180ML72100M	9.0#	\$326.00
M180ML72125M	8.0#	\$326.00
M230ML524F	7.5#	\$211.00
M230ML522AA	7.5#	\$211.00
M230ML522A	7.0#	\$211.00
M230ML522B	8.0#	\$218.00
M230ML522C	7.0#	\$218.00
M230ML5263M(S)	7.5#	\$326.00
M230ML5280M(S)	7.0#	\$326.00
M230ML52100M	7.5#	\$326.00
M230ML52125M	7.0#	\$326.00
M230ML554F	7.5#	\$211.00
M230ML552AA	7.5#	\$211.00
M230ML552A	7.0#	\$211.00
M230ML552B	8.0#	\$218.00
M230ML552C	7.0#	\$218.00
M230ML5563M(S)	7.5#	\$326.00
M230ML5580M(S)	7.0#	\$326.00
M230ML55100M	7.5#	\$326.00
M230ML55125M	7.0#	\$326.00
M230ML604F	7.0#	\$211.00
M230ML602AA	7.0#	\$211.00
M230ML602A	7.0#	\$211.00
M230ML602B	8.0#	\$218.00
M230ML602C	7.5#	\$218.00
M230ML6063M(S)	7.0#	\$326.00
M230ML6080M(S)	7.0#	\$326.00
M230ML60100M	8.0#	\$326.00
M230ML60125M	7.5#	\$326.00
M230ML704F	7.5#	\$245.00
M230ML702AA	7.5#	\$245.00
M230ML702A	7.0#	\$245.00
M230ML702B	8.5#	\$251.00
M230ML702C	8.0#	\$251.00
M230ML7063M(S)	7.5#	\$326.00
M230ML7080M(S)	7.0#	\$326.00
M230ML70100M	8.5#	\$326.00
M230ML70125M	8.0#	\$326.00

Part Number	Approx. Weight	List Price
M250ML782B	16.5#	\$451.00
M250ML782C	16.0#	\$451.00
M250ML782D	16.5#	\$483.00
M250ML78100M	16.5#	\$487.00
M250ML78125M	16.0#	\$487.00
M250ML78160M	15.5#	\$487.00
M250ML78180M	15.0#	\$487.00
M250ML892B	18.0#	\$511.00
M250ML892C	17.5#	\$511.00
M250ML892D	17.0#	\$538.00
M250ML89100M	18.0#	\$538.00
M250ML89125M	17.0#	\$538.00
M250ML89160M	17.0#	\$538.00
M250ML89180M	16.5#	\$538.00

Magnaloy Cast Aluminum Pump/Motors for IEC Metric Frame Motors include mounting bolts and washers required to install the pump to the Magnaloy mount, bolts for installing the Metric Motor to the Mount are NOT included. All Magnaloy Pump/Motor Mounts are machined with pump mounting holes to accommodate either 2 bolt or 4 bolt configurations.

Cast Aluminum Vertical Mounts * **

NEMA Frame Motors

Part Number	Approx. Weight	List Price
M056354FV	2.0#	\$69.00
M056352AAV	2.0#	\$69.00
M056352AV	2.0#	\$69.00
M0563563M(S)V	2.0#	\$99.00
M0563580M(S)V	2.0#	\$99.00
M056424FV	2.5#	\$69.00
M056422AAV	2.5#	\$69.00
M056422AV	2.0#	\$69.00
M0564263M(S)V	2.0#	\$99.00
M0564280M(S)V	2.0#	\$99.00
M056454FV	2.5#	\$72.00
M056452AAV	2.5#	\$72.00
M056452AV	2.0#	\$72.00
M0564563M(S)V	2.0#	\$99.00
M0564580M(S)V	2.0#	\$99.00
M056504FV	3.0#	\$110.00
M056502AAV	3.0#	\$110.00
M056502AV	3.0#	\$110.00
M056502BV	2.5#	\$110.00
M0565063M(S)V	2.5#	\$142.00
M0565080M(S)V	2.5#	\$142.00
M05650100MV	2.5#	\$142.00
M056524FV	4.0#	\$131.00
M056522AAV	4.0#	\$131.00
M056522AV	4.0#	\$131.00
M056522BV	3.5#	\$131.00
M0565263M(S)V	3.5#	\$167.00
M0565280M(S)V	3.5#	\$167.00
M05652100MV	3.5#	\$167.00
M182504FV	7.0#	\$115.00
M182502AAV	7.0#	\$115.00
M182502AV	6.5#	\$115.00
M1825063M(S)V	6.5#	\$162.00
M1825080M(S)V	6.5#	\$162.00

Part Number	Approx. Weight	List Price
M182524FV	7.5#	\$115.00
M182522AAV	7.5#	\$115.00
M182522AV	7.0#	\$115.00
M182522BV	8.0#	\$138.00
M182522CV	7.0#	\$138.00
M1825263M(S)V	7.0#	\$165.00
M1825280M(S)V	7.0#	\$165.00
M18252100MV	7.5#	\$165.00
M18252125MV	7.0#	\$165.00
M182584FV	7.0#	\$115.00
M182582AAV	7.0#	\$115.00
M182582AV	7.0#	\$115.00
M182582BV	8.0#	\$115.00
M182582CV	7.5#	\$115.00
M1825863M(S)V	7.0#	\$165.00
M1825880M(S)V	7.0#	\$165.00
M18258100MV	8.0#	\$165.00
M18258125MV	7.5#	\$165.00
M182684FV	7.5#	\$126.00
M182682AAV	7.5#	\$126.00
M182682AV	7.0#	\$126.00
M182682BV	8.5#	\$130.00
M182682CV	8.0#	\$130.00
M1826863M(S)V	7.0#	\$178.00
M1826880M(S)V	7.0#	\$178.00
M18268100MV	8.5#	\$178.00
M18268125MV	8.0#	\$178.00
M182702BV	8.5#	\$137.00
M182702CV	8.0#	\$137.00
M18270100MV	8.5#	\$194.00
M18270125MV	8.0#	\$194.00

* Mount Kits for the 182 Motor Frame Group Vertical mounts do not include hardware to

** Vertical Mounts in the 182 Motor Frame Group include the Gasket.

Cast Aluminum Vertical Gaskets

Part Number	Description	List Price
M056VG-NI	NEMA 56C thru 145TC Vertical Mounting Gasket (Option A) (thick Nitrile (70D) material)	\$13.00
M182AVG-NI ***	NEMA 182TC thru 256TC Vertical Mounting Gasket with SAE A Flange and SMALLER Pumps (Option A) (thick Nitrile (70D) material)	\$22.00
M182BVG	NEMA 182TC thru 256TC Vertical Mounting Gasket with SAE B Flange and LARGER Pumps (Option B) included with Mount	\$33.00

Cast Aluminum Engine Mounts

Part Number	Approx. Weight	List Price
E575504F	4.0#	\$85.00
E575502AA	4.0#	\$85.00
E575502A	4.0#	\$85.00
E575502B	4.0#	\$85.00
E5755063M(S)	4.0#	\$113.00
E5755080M(S)	4.0#	\$113.00
E57550100M	4.0#	\$113.00
E575524F	5.0#	\$88.00
E575522AA	5.0#	\$88.00
E575522A	4.5#	\$88.00
E575522B	4.5#	\$88.00
E5755263M(S)	4.5#	\$114.00
E5755280M(S)	4.5#	\$114.00
E57552100M	4.5#	\$114.00
E575604F	5.0#	\$94.00
E575602AA	5.0#	\$94.00
E575602A	5.0#	\$94.00
E575602B	6.0#	\$98.00
E5756063M(S)	6.0#	\$131.00
E5756080M(S)	6.0#	\$131.00
E57560100M	6.0#	\$131.00
E644504F	5.0#	\$109.00
E644502AA	5.0#	\$109.00
E644502A	4.5#	\$109.00
E6445063M(S)	4.5#	\$171.00
E6445080M(S)	4.5#	\$171.00
E644554F	5.0#	\$109.00
E644552AA	5.0#	\$109.00
E644552A	5.0#	\$109.00
E644552B	5.5#	\$109.00
E6445563M(S)	5.0#	\$171.00
E6445580M(S)	5.0#	\$171.00
E64455100M	5.5#	\$171.00
E644604F	5.5#	\$114.00
E644602AA	5.5#	\$114.00
E644602A	5.0#	\$114.00
E644602B	6.0#	\$114.00
E644602C	6.0#	\$114.00
E6446063M(S)	5.0#	\$176.00
E6446080M(S)	5.0#	\$176.00
E64460100M	6.0#	\$176.00
E64460125M	6.0#	\$176.00

Part Number	Approx. Weight	List Price
E644704F	5.5#	\$115.00
E644702AA	5.5#	\$115.00
E644702A	5.5#	\$115.00
E644702B	6.0#	\$115.00
E644702C	6.0#	\$115.00
E6447063M(S)	5.5#	\$179.00
E6447080M(S)	5.5#	\$179.00
E64470100M	6.0#	\$179.00
E64470125M	6.0#	\$179.00
E644722B	6.5#	\$115.00
E644722C	6.0#	\$115.00
E64472100M	6.5#	\$179.00
E64472125M	6.0#	\$179.00
E700504F	5.0#	\$115.00
E700502AA	5.0#	\$115.00
E700502A	4.5#	\$115.00
E7005063M(S)	4.5#	\$181.00
E7005080M(S)	4.5#	\$181.00
E700554F	5.0#	\$115.00
E700552AA	5.0#	\$115.00
E700552A	5.0#	\$115.00
E700552B	5.5#	\$115.00
E7005563M(S)	5.0#	\$181.00
E7005580M(S)	5.0#	\$181.00
E70055100M	5.5#	\$181.00
E700604F	5.0#	\$115.00
E700602AA	5.0#	\$115.00
E700602A	5.0#	\$115.00
E700602B	6.0#	\$115.00
E700602C	5.5#	\$115.00
E7006063M(S)	5.0#	\$181.00
E7006080M(S)	5.0#	\$181.00
E70060100M	6.0#	\$181.00
E70060125M	5.5#	\$181.00
E700704F	5.0#	\$123.00
E700702AA	5.0#	\$123.00
E700702A	5.5#	\$123.00
E700702B	6.0#	\$123.00
E700702C	6.0#	\$123.00
E7007063M(S)	5.5#	\$190.00
E7007080M(S)	5.5#	\$190.00
E70070100M	6.0#	\$190.00
E70070125M	6.0#	\$190.00

Part Number	Approx. Weight	List Price
E700722B	6.0#	\$123.00
E700722C	6.0#	\$123.00
E70072100M	6.0#	\$190.00
E70072125M	6.0#	\$190.00
E787682A	9.0#	\$245.00
E787682B	9.0#	\$245.00
E787682C	8.0#	\$245.00
E7876863M(S)	9.0#	\$305.00
E7876880M(S)	9.0#	\$305.00
E78768100M	9.0#	\$305.00
E78768125M	8.0#	\$305.00
E787752A	9.5#	\$245.00
E787752B	9.0#	\$245.00
E787752C	8.5#	\$245.00
E7877563M(S)	9.5#	\$305.00
E7877580M(S)	9.5#	\$305.00
E78775100M	9.0#	\$305.00
E78775125M	8.5#	\$305.00
E787862A	9.5#	\$245.00
E787862B	9.5#	\$245.00
E787862C	9.0#	\$245.00
E7878663M(S)	9.5#	\$305.00
E7878680M(S)	9.5#	\$305.00
E78786100M	9.5#	\$305.00
E78786125M	9.0#	\$305.00

Welded Steel Horizontal Mounts *

Part Number	Length	List Price	
S056 -- 4F	ALL	\$427.00	
S056 -- 2AA		\$427.00	
S056 -- 2A		\$403.00	
S056 -- 2B		\$402.00	
S056 -- 2C		\$427.00	
S056 -- 63M(S)		\$457.00	
S056 -- 80M(S)		\$457.00	
S056 -- 100M		\$457.00	
S056 -- 125M		\$469.00	
S182 -- 4F		ALL	\$583.00
S182 -- 2AA	\$583.00		
S182 -- 2A	\$560.00		
S182 -- 2B	\$560.00		
S182 -- 2C	\$577.00		
S182 -- 2D	\$659.00		
S182 -- PVR50	\$659.00		
S182 -- 63M(S)	\$587.00		
S182 -- 80M(S)	\$587.00		
S182 -- 100M	\$587.00		
S182 -- 125M	\$607.00		
S182 -- 160M	\$740.00		
S182 -- 180M	\$740.00		
S284 -- 2A	ALL		\$537.00
S284 -- 2B			\$537.00
S284 -- 2C		\$547.00	
S284 -- 2D		\$618.00	
S284 -- PVR50		\$618.00	
S284 -- 2E		\$829.00	
S284 -- 2F		\$829.00	
S284 -- 63M(S)		\$564.00	
S284 -- 80M(S)		\$595.00	
S284 -- 100M		\$595.00	
S284 -- 125M		\$574.00	
S284 -- 160M		\$686.00	
S284 -- 180M		\$668.00	
S284 -- 200M		\$668.00	
S284 -- 250M		\$704.00	
S324 -- 2A	UP TO 8 INCHES	\$622.00	
S324 -- 2B		\$622.00	
S324 -- 2C		\$622.00	
S324 -- 2D		\$685.00	
S324 -- PVR50		\$685.00	
S324 -- 2E		\$693.00	
S324 -- 2F		\$704.00	
S324 -- 63M(S)		\$690.00	
S324 -- 80M(S)		\$654.00	
S324 -- 100M		\$690.00	
S324 -- 125M		\$700.00	
S324 -- 160M		\$757.00	
S324 -- 180M		\$757.00	
S324 -- 200M		\$757.00	
S324 -- 250M		\$757.00	

Part Number	Length	List Price
S324 -- 2A	OVER 8 INCHES	\$640.00
S324 -- 2B		\$640.00
S324 -- 2C		\$640.00
S324 -- 2D		\$701.00
S324 -- PVR50		\$740.00
S324 -- 2E		\$709.00
S324 -- 2F		\$721.00
S324 -- 63M(S)		\$709.00
S324 -- 80M(S)		\$672.00
S324 -- 100M		\$709.00
S324 -- 125M		\$672.00
S324 -- 160M		\$736.00
S324 -- 180M		\$744.00
S324 -- 200M		\$758.00
S324 -- 250M		\$800.00
S444 -- 2A	UP TO 8.5 INCHES	\$803.00
S444 -- 2B		\$803.00
S444 -- 2C		\$828.00
S444 -- 2D		\$828.00
S444 -- PVR50		\$828.00
S444 -- 2E		\$848.00
S444 -- 2F		\$848.00
S444 -- 63M(S)		\$828.00
S444 -- 80M(S)		\$828.00
S444 -- 100M		\$828.00
S444 -- 125M	\$869.00	
S444 -- 160M	\$869.00	
S444 -- 180M	\$888.00	
S444 -- 200M	\$888.00	
S444 -- 250M	\$888.00	
S444 -- 2A	OVER 8.5 INCHES	\$836.00
S444 -- 2B		\$836.00
S444 -- 2C		\$853.00
S444 -- 2D		\$853.00
S444 -- PVR50		\$853.00
S444 -- 2E		\$928.00
S444 -- 2F		\$928.00
S444 -- 63M(S)		\$853.00
S444 -- 80M(S)		\$853.00
S444 -- 100M		\$853.00
S444 -- 125M	\$895.00	
S444 -- 160M	\$895.00	
S444 -- 180M	\$972.00	
S444 -- 200M	\$972.00	
S444 -- 250M	\$972.00	

Magnaloy Welded Steel Pump/Motors do not include mounting bolts and washers. All Magnaloy Pump/Motor Mounts are machined with pump mounting holes to accommodate either 2 bolt or 4 bolt configurations.

Welded Steel Engine Mounts *

Part Number	Length	List Price
SE575 -- 4F	ALL	\$676.00
SE575 -- 2AA		\$676.00
SE575 -- 2A		\$676.00
SE575 -- 63M(S)		\$734.00
SE575 -- 80M(S)		\$734.00
SE575 -- 100M	\$734.00	
SE644 -- 4F	ALL	\$940.00
SE644 -- 2AA		\$940.00
SE644 -- 2A		\$969.00
SE644 -- 2B		\$969.00
SE644 -- 2C		\$969.00
SE644 -- 2D		\$993.00
SE644 -- 63M(S)		\$969.00
SE644 -- 80M(S)		\$969.00
SE644 -- 100M		\$969.00
SE644 -- 125M		\$993.00
SE644 -- 160M	\$993.00	
SE644 -- 180M	\$993.00	
SE700 -- 4F	ALL	\$961.00
SE700 -- 2AA		\$961.00
SE700 -- 2A		\$961.00
SE700 -- 2B		\$961.00
SE700 -- 2C		\$961.00
SE700 -- 2D		\$983.00
SE700 -- 63M(S)		\$961.00
SE700 -- 80M(S)		\$961.00
SE700 -- 100M		\$961.00
SE700 -- 125M		\$983.00
SE700 -- 160M		\$983.00
SE700 -- 180M		\$983.00
SE787 -- 4F		ALL
SE787 -- 2AA	\$984.00	
SE787 -- 2A	\$984.00	
SE787 -- 2B	\$984.00	
SE787 -- 2C	\$984.00	
SE787 -- 2D	\$1,006.00	
SE787 -- 63M(S)	\$984.00	
SE787 -- 80M(S)	\$984.00	
SE787 -- 100M	\$984.00	
SE787 -- 125M	\$1,006.00	
SE787 -- 160M	\$1,006.00	
SE787 -- 180M	\$1,006.00	

* Magnaloy Welded Steel Mounts do not include mounting bolts and washers.

Welded Steel Vertical Mounts *

Part Number	Length	List Price
S056 -- 4FV	ALL	\$612.00
S056 -- 2AAV		\$612.00
S056 -- 2AV		\$507.00
S056 -- 2BV		\$507.00
S056 -- 2CV		\$571.00
S056 -- 63M(S)V		\$624.00
S056 -- 80M(S)V		\$624.00
S056 -- 100MV		\$624.00
S056 -- 125MV		\$624.00
S182 -- 4FV	ALL	\$702.00
S182 -- 2AAV		\$665.00
S182 -- 2AV		\$644.00
S182 -- 2BV		\$644.00
S182 -- 2CV		\$659.00
S182 -- 2DV		\$740.00
S182 -- 63M(S)V		\$714.00
S182 -- 80M(S)V		\$714.00
S182 -- 100MV		\$714.00
S182 -- 125MV		\$729.00
S182 -- 160MV		\$819.00
S182 -- 180MV		\$842.00
S284 -- 2AV	ALL	\$583.00
S284 -- 2BV		\$583.00
S284 -- 2CV		\$590.00
S284 -- 2DV		\$660.00
S284 -- 2EV		\$714.00
S284 -- 2FV		\$714.00
S284 -- 63M(S)V		\$645.00
S284 -- 80M(S)V		\$645.00
S284 -- 100MV		\$645.00
S284 -- 125MV		\$620.00
S284 -- 160MV		\$730.00
S284 -- 180MV		\$749.00
S284 -- 200MV		\$749.00
S284 -- 250MV		\$749.00
S324 -- 2AV		UP TO 8 INCHES
S324 -- 2BV	\$682.00	
S324 -- 2CV	\$682.00	
S324 -- 2DV	\$682.00	
S324 -- 2EV	\$784.00	
S324 -- 2FV	\$792.00	
S324 -- 63M(S)V	\$769.00	
S324 -- 80M(S)V	\$769.00	
S324 -- 100MV	\$754.00	
S324 -- 125MV	\$754.00	
S324 -- 160MV	\$754.00	
S324 -- 180MV	\$771.00	
S324 -- 200MV	\$786.00	
S324 -- 250MV	\$786.00	

Part Number	Length	List Price
S324 -- 180MV	UP TO 8 INCHES	\$771.00
S324 -- 200MV		\$786.00
S324 -- 250MV		\$786.00
S324 -- 2AV	OVER 8 INCHES	\$739.00
S324 -- 2BV		\$700.00
S324 -- 2CV		\$700.00
S324 -- 2DV		\$761.00
S324 -- 2EV		\$816.00
S324 -- 2FV		\$875.00
S324 -- 63M(S)V		\$775.00
S324 -- 80M(S)V		\$775.00
S324 -- 100MV		\$776.00
S324 -- 125MV		\$735.00
S324 -- 160MV		\$776.00
S324 -- 180MV		\$849.00
S324 -- 200MV	\$820.00	
S324 -- 250MV	\$865.00	
S444 -- 2AV	UP TO 8.5 INCHES	\$825.00
S444 -- 2BV		\$825.00
S444 -- 2CV		\$849.00
S444 -- 2DV		\$849.00
S444 -- 2EV		\$869.00
S444 -- 2FV		\$869.00
S444 -- 63M(S)V		\$866.00
S444 -- 80M(S)V		\$866.00
S444 -- 100MV		\$866.00
S444 -- 125MV		\$892.00
S444 -- 160MV		\$892.00
S444 -- 180MV		\$912.00
S444 -- 200MV		\$912.00
S444 -- 250MV		\$912.00
S444 -- 2AV		OVER 8.5 INCHES
S444 -- 2BV	\$856.00	
S444 -- 2CV	\$873.00	
S444 -- 2DV	\$873.00	
S444 -- 2EV	\$898.00	
S444 -- 2FV	\$898.00	
S444 -- 63M(S)V	\$899.00	
S444 -- 80M(S)V	\$899.00	
S444 -- 100MV	\$899.00	
S444 -- 125MV	\$916.00	
S444 -- 160MV	\$916.00	
S444 -- 180MV	\$942.00	
S444 -- 200MV	\$942.00	
S444 -- 250MV	\$942.00	

*** Magnaloy Welded Steel Pump/Motor Mounts do not include mounting bolts and washers.**

All Magnaloy Pump/Motor Mounts are machined with pump mounting holes to accommodate either 2 bolt or 4 bolt configurations.

Service Window Covers & Special Mounting

Standard Service Window Covers (Color - Orange)

Mount Service Window Covers		
Part * Number	Fits Mount Number	List Price
M056-2	M056__ Horizontal & Vertical	\$7.00
M182-1	M18250__ & M18252__ Horizontal & Vertical E64455__ & E70055__ Engine	\$5.00
M182-2	M18258__ & M18260__ Horizontal & Vertical E64460__ & E70060__ Engine	\$7.00
M182-3	M18268__ & M18270__ Horizontal & Vertical E64470__ & E64472__ Engine E70070__ & E70071__ Engine	\$7.00
M182-4	M18247__ Horizontal E64450__ & E70050__ Engine	\$7.00
M284-1	M28468__ Horizontal E78768__ Engine	\$15.00

Mount Service Window Covers		
Part * Number	Fits Mount Number	List Price
M284-2	M28475__ Horizontal E78775__ Engine	\$15.00
M284-3	M28486__ Horizontal E78786__ Engine	\$15.00
M324-1	M32476__ Horizontal S324 7.57 to 8.70 length	\$18.00
M324-2	M32487__ Horizontal S324 8.70 to 10.20 length	\$18.00
M324-3	S324 8.70 to 10.20 length	\$18.00
M324-4	S324-10.20 to 12.20 length	\$18.00
M324-5	S324- 12.20 and greater length	\$18.00
M444-1	S444 8.95 to 10.45 length	\$22.00
M444-2	S444 10.45 to 12.45 length	\$22.00
M444-3	S444 12.45 and greater length	\$22.00

All Magnaloy Pump/Motor Mounts are supplied with one Service Window Cover installed. If additional Service Window Covers are required, order by part number in table.

* Cover Part Number is molded into the inside surface of the cover.

Optional Service Window Covers (Color - Yellow)

Mount Service Window Covers		
Part * Number	Fits Mount Number	List Price
M182-1-Y	M18250__ & M18252__ Horizontal & Vertical E64455__ & E70055__ Engine	\$15.00
M182-2-Y	M18258__ & M18260__ Horizontal & Vertical E64460__ & E70060__ Engine	\$15.00
M182-3-Y	M18268__ & M18270__ Horizontal & Vertical E64470__ & E64472__ Engine E70070__ & E70071__ Engine	\$15.00
M182-4-Y	M18247__ Horizontal E64450__ & E70050__ Engine	\$15.00
M284-1-Y	M28468__ Horizontal E78768__ Engine	\$30.00
M284-2-Y	M28475__ Horizontal E78775__ Engine	\$30.00
M284-3-Y	M28486__ Horizontal E78786__ Engine	\$30.00

Mount Service Window Covers		
Part * Number	Fits Mount Number	List Price
M324-1-Y	M32476__ Horizontal S324 7.57 to 8.70 length	\$24.00
M324-2-Y	M32487__ Horizontal S324 8.70 to 10.20 length	\$36.00
M324-3-Y	S324 8.70 to 10.20 length	\$36.00
M324-4-Y	S324-10.20 to 12.20 length	\$36.00
M324-5-Y	S324- 12.20 and greater length	\$36.00
M444-1-Y	S444 8.95 to 10.45 length	\$45.00
M444-2-Y	S444 10.45 to 12.45 length	\$45.00
M444-3-Y	S444 12.45 and greater length	\$45.00

Special Mounting Configurations

Part * Number Suffix	Description	List Price	List Price
		Alum	Steel
M8	4 Add'l Motor Mounting Holes to Allow 45° Orientation of Mount	\$41.00	\$85.00
45°	Rotation of the 2 Bolt Pump Flange Mounting Holes to Allow +/-450 Orientation of the Pump	\$20.00	\$25.00
W	For Vertical Mounts - mounting holes are tapped per World Wide Motor Bulletin	\$26.00	\$28.00

*This is a Part Number Suffix to the Base Mount Part Number. Example: M182522BM8 or

1) The 450 Orientation Option is available on all Welded Steel Mounts and 056-USA4F17, SAE AA SAE A, and ISO 63 & 80 mounts AND 182-USAF17, SAE AA, SAE A and ISO 63 & 80 mounts **ONLY**.

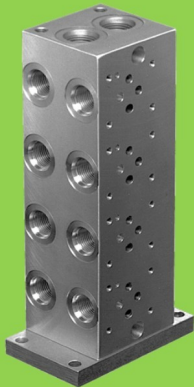
Make the Connection with **magnaloy**

Whatever your Fluid Power Unit needs, Magnaloy has the products to keep you connected.



Flexible Drive Couplings

Top-of-the-line magnesium couplings are lighter, yet stronger than either cast iron or aluminum. They also offer better corrosion resistance and easier handling.

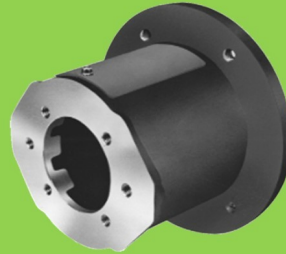


Magnaloy Hydraulic Bar Manifolds & Accessories

Complete line of Inline Bar Manifolds, Subplates, Cover Plates, Valve Adaptors, Integrated Circuit Manifolds, and Accessories to make the design and fabrication of Hydraulic Circuitry simple and easy. Wide range of sizes include: D03, D05, D05H & D08 in aluminum and steel with ports available in SAE, NPTF, BSPP, and BSPT styles. Custom design and fabrication also available, consult factory.

Accessories

Filler Breather Adaptors, Filler Breathers, Reservoir Flanges, Suction Strainers, Gauge Isolators, Liquid Level Gauges, Modular O-Ring Kits.



Pump/Motor Mounts

Precision machined aluminum & custom steel pump/motor mounts directly connect the motor and pump while ensuring accurate shaft alignment and enclosing the coupling. Vertical and horizontal models readily available from stock.



Rod End Couplers

Two models of accurately machined high tensile cylinder rod end alignment couplers offer 7° or 10° spherical and 1/8" parallel misalignment capabilities.



PM 90 Couplings

Economical PM-90 Iron Powder Couplings have long lasting nitrile, hytel or urethane inserts. Double set screws give excellent gripping power.



Magnaloy Reservoirs & Reservoir Accessories

Pressure Magnaloy offers a complete line of standard reservoirs and reservoir accessories. In addition, we offer custom reservoir fabrication to meet our customer specific needs. Reservoir accessories such as Clean Out Covers and SAE Couplings are available for the "do-it-yourself" reservoir manufacturer.



Magnaloy Pressure Switch

Pressure Sensing switch capable of sensing up to two (2) separate pressures. Each sensor is externally independently adjustable from 200 to 4000 psi. Viton seals provide wide fluid compatibility range.

Magnaloy coupling company 170 N Industrial Hwy., Alpena, MI 49707 989-356-2186

A Division of Douville Johnston Corporation

Fax: 989-354-4190 www.magnaloy.com

B